

# HIPP Endoskop Service GmbH

>> *your requirements are our aims.*



## HIPP Accessories

### Cold Light Sources & Optical Fibers

MADE IN GERMANY



# HIPP Borescopes

>> *for industrial application.*



## ■ Our vision – giving the gift of time to our customers

The optimum orientation towards our customers with their needs and requirements constitutes a constant challenge for us to make a small but valuable contribution in facilitating their daily routine. Due to a service portfolio tailored to suit the specific needs of the market and compatibility with other well-known borescope manufacturers, HIPP has evolved into one of the leading companies in the field of industrial endoscopy. We might not be a leader in terms of company size or volumes of systems installed, but certainly we are a leader in manufacturing a well-selected product range of customized borescopes.

HIPP Endoskop Service GmbH was founded in July 1996 by Alexander and Frank Hipp. As integrated service providers and manufacturers we stand for traditional value structures. Our activities have always been focussed on the development, maintenance and manufacture of all types of industrial borescopes. Thanks to our extensive know-how along with the strong personal commitment of all our employees, creativity, team spirit as well as the stability and permanence of a family-owned business we guarantee the highest level of quality – “Made in Germany”.

## HIPP Service – customer orientation is our benchmark

Of course, customer care and after-sales service are our first priority. Spare parts supply is guaranteed for 10 years. Short repair times in the event of damage (14 days) as well as quick and uncomplicated processing are part of our standards.

# HIPP Accessories

>> *lighting.*



## ■ HIPP Accessories for perfect illumination

The comprehensive range of HIPP Accessories offers numerous lighting options for stationary and mobile applications. HIPP Adapters allow the combination of boscopes and light sources from different manufacturers (see accessory "HIPP Adapter").

### Accessories Lighting

- LED Light Sources
- Cold Light Cable / Optical Fiber
- Light Sticks



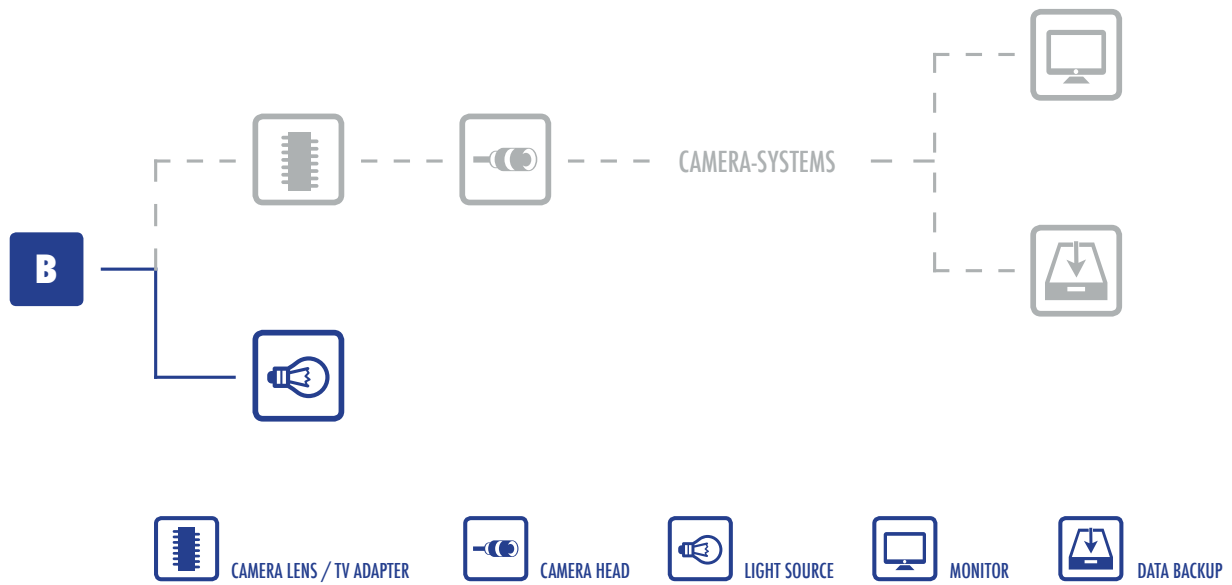
# HIPP Accessories

>> modular system.



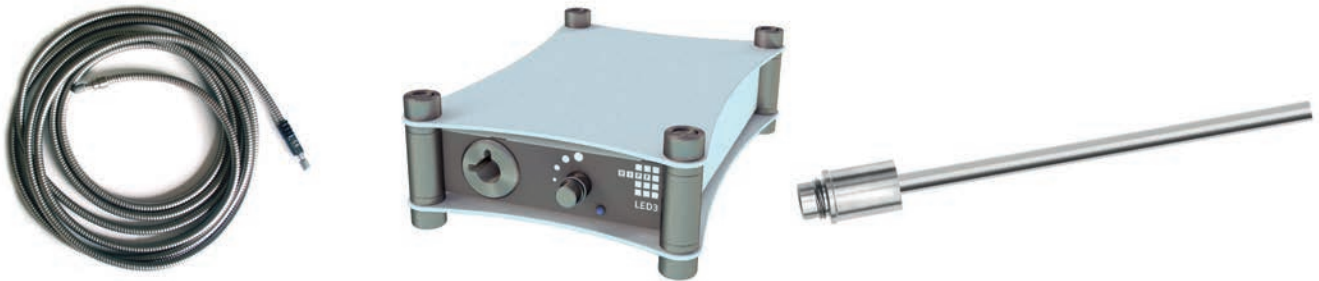
## Modular System

The HIPP Accessory is compatible with various camera systems and light sources.



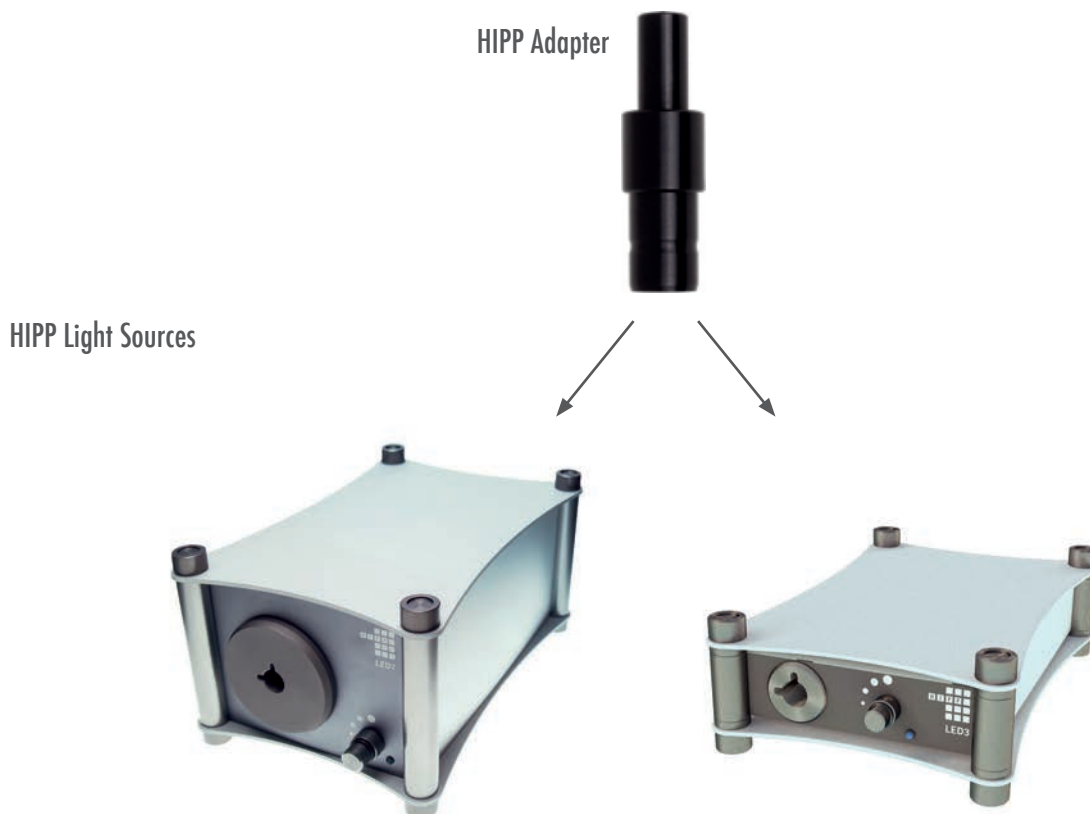
# HIPP Accessories

>> *connection.*



## ■ Connecting the borescope to the light source

The lighting is compatible with all flexible and rigid boroscopes equipped with an ACMI light connector. For Hipp Boroscopes, adapters for "Storz" and "Wolf" are available. When using a HIPP Cold Light Cable or Light Guide, light sources from other manufacturers can also be used.



# HIPP LED F-3000-P

>> *cold light source.*



## Product Profile

---

Despite the fanless cooling, which makes this cold light source ideal for cleanroom applications, its brightness exceeds that of a 150 watt halogen cold light source.



- Flicker-free light due to optimized low-loss electronics
- Glare protection through optical fiber detection
- Robust aluminium housing in a modern design
- Fittable with adapters to different light guides
- Stackable and horizontally positionable
- No lamp replacement thanks to LED technology
- Lower power consumption with 20% more light output compared to a conventional 150 watt halogen light source
- Passively cooled
- Absolutely silent

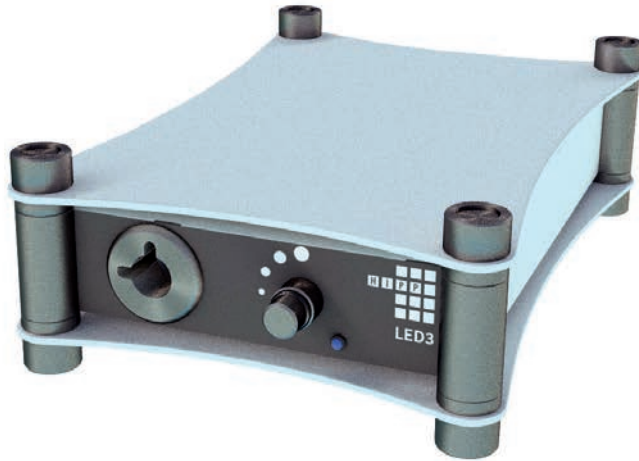
## Standard

---

- Unrivaled radiant power
- Exceptionally compact design
- Brightness regulation
- Dust protection
- 1 year warranty

# HIPP LED F-3000-P

>> *cold light source.*



## Technical Specifications

- Luminous flux at optical fiber: • 1 m × Ø 9 mm: 650 lm
- Color temperature: • 5.700 K
- Fiber optic connection: • Ø 15 mm
- Power consumption: • 44 W
- Operating voltage: • 100 - 240 V AC, 50/60 Hz
- LED life: • 50.000 h (manufacturer)
- Dimension (L×B×H): • 259 mm × 174 mm × 81 mm
- Material: • anodised aluminium
- Colour: • titanium and grey
- Weight: • ca. 3.7 kg
- Delivery: • LED cold light source LED3, desktop power supply

## Cold Light Source

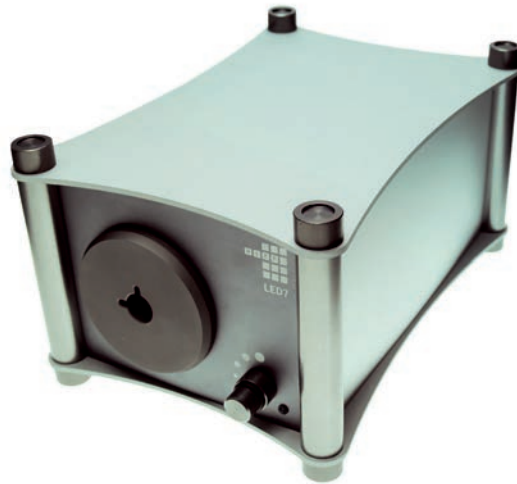
Item	Item-No.
LED F-3000-P	HT-LEDF-3000-P





# HIPP LED F-7000

>> *cold light source.*



## Product Profile

---

The LED of this cold light source is extremely bright. It is the perfect choice for all lighting tasks, where above all extreme brightness is required.



- Flicker-free light through optimized, low-loss electronics
- Glare protection through optical fiber detection
- Fittable with adapters to different light guides
- Stackable and horizontally positionable
- Built-in power supply including cold device cable
- No lamp replacement thanks to LED technology
- Lower power consumption with 20% more light output compared to a conventional 250 watt halogen light source

## Standard

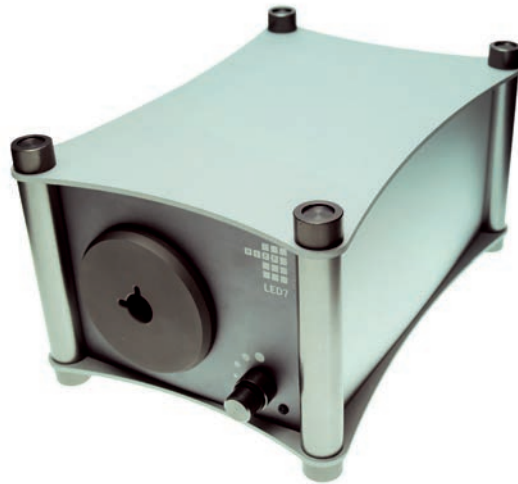
---

- Unrivalled radiant power
- Exceptionally compact design
- Brightness regulation
- 1 year warranty



# HIPP LED F-7000

>> cold light source.



## Technical Specifications

- Luminous flux at optical fiber: • 1 m × Ø 9 mm: 1350 lm
- Color temperature: • 6.900 K
- Fiber optic connection: • Ø 15 mm
- Light source: • 70W-Power-LED
- Power consumption: • 78 W
- Operating voltage: • 100 - 240 V AC, 50/60 Hz
- LED life: • 50.000 h (manufacturer)
- Temperature: • 5° C bis 35° C
- Dimension (L×B×H): • 259 mm × 174 mm × 137 mm
- Material: • anodised aluminium
- Colour: • titanium and grey
- Weight: • ca. 2.7 kg
- Delivery: • LED cold light source LED7-F

## Cold Light Source

Item	Item-No.
LED F-7000	HT-LEDF-7000



# HIPP LED F-7000-F

>> *cold light source.*



## Product Profile

The LED of this cold light source is extremely bright. It is the perfect choice for all lighting tasks, where above all extreme brightness is required. A fine dust filter prevents damage to the light source.



- Flicker-free light through optimized, low-loss electronics
- Glare protection through optical fiber detection
- With fine dust filter
- Fittable with adapters to different light guides
- Stackable and horizontally positionable
- Built-in power supply including cold device cable
- No lamp replacement thanks to LED technology
- Lower power consumption with 20% more light output compared to a conventional 250 watt halogen light source

## Standard

- Unrivaled radiant power
- Exceptionally compact design
- Brightness regulation
- Dust protection
- 1 year warranty

# HIPP LED F-7000-F

>> cold light source.



## Technical Specifications

Filter:	• particulate matter
Luminous flux at optical fiber:	• 1 m × Ø 9 mm: 1350 lm
Color temperature:	• 6.900 K
Fiber optic connection:	• Ø 15 mm
Light source:	• 70W-Power-LED
Power consumption:	• 78 W
Operating voltage:	• 100 - 240 V AC, 50/60 Hz
LED life:	• 50.000 h (manufacturer)
Temperature:	• 5° C bis 35° C
Dimension (L×B×H):	• 259 mm × 174 mm × 137 mm
Material:	• anodised aluminium
Colour:	• titanium and grey
Weight:	• ca. 2.7 kg
Delivery:	• LED cold light source LED7-F

## Cold Light Source

Item	Item-No.
LED F-7000-F	HT-LEDF-7000-F



# HIPP mobiLED-5

>> *mobile hand light source.*



## Product Profile

The mobiLED is a rechargeable mobile LED handheld with the latest LED and battery technology for working with the endoscope without interfering light cables and power plugs.



- High radiation output despite independence from mains connection
- Rechargeable Li-ion battery
- Rechargeable via USB cable or battery charger
- No lamp replacement thanks to LED technology
- Lower power consumption with 20% more light output compared to a conventional 150 watt halogen light source

## Standard

- Unrivaled radiant power
- Exceptionally compact design
- Brightness regulation
- Dust protection / splash-proof IP 65
- 1 year warranty

# HIPP mobiLED-5

>> mobile hand light source.



## Technical Specifications

Radiant power:

charging time:

Weight:

Battery:

Temperature:

Storage / transport temperature:

Relative humidity:

Delivery:

Case diameter:

Length:

Weight (without battery):

Battery life at level 4:

Battery life at level 3:

Battery life at level 2:

Battery life at level 1:

Battery recharge time:

Battery-type Fenix ARB-L2-2600:

LED type Cree XM-L2 U2:

Temperature range (safe operation):

IP protection class:

Temperature range (safe storage and transport):

Relative humidity (safe operation, storage and transport):

- 10 bis 960 Lumen in 4 stages
- 3,5 hours
- 123 g (no battery)
- 18650 Li-ion Akku 3,7V 2600mAh 9.62Wh
- +15° C bis +30 ° C
- -25° C bis +50° C
- 0 % - 95 %
- light source, li-ion battery, USB charging cable
- 25mm
- 140 mm
- 123 g
- 2 hours
- 5 hours
- 9 hours
- 100 hours
- 3,5 hours
- 18650 Li-ion battery 3.7 V 2600 mAh 9.62 Wh
- 40000 h life
- 15° C - 30° C [59° F - 86° F]
- IP64 (dust-tight, splash-proof)
- -18° C - 50° C [-13° F - 122° F]
- 0% - 95% RH



# HIPP mobiLED-5

>> *mobile hand light source.*



## Mobile Hand Light Source

Item	Light connection	Dimensions (ø x L) mm	Weight (g)	Item-No.
mobiLED (including battery, USB charging cable)	ACMI	25 x 140	123	HT-LED5-10-ZU
Lithium-ion battery				HT-LED2-11-ZU
External battery charger	optional, battery can be charged via USB port			HT-LED2-12-ZU

# HIPP mobiLED-5

>> *your notes.*

Your Notes

---





# HIPP Optical Fibers

>> *for halogen & universal light sources.*



## Product Profile

---



Passive optical fiber for connection to an external light source. Optical fibers ensure optimum light transmission from the light source to the borescope. Full compatibility with light sources and boroscopes of all well-known manufacturer. (Compatible brands: Storz / R. Wolf / Olympus / IT Concept / Streppel / Schölly)

# HIPP Optical Fibers

>> variant overview for halogen light sources.

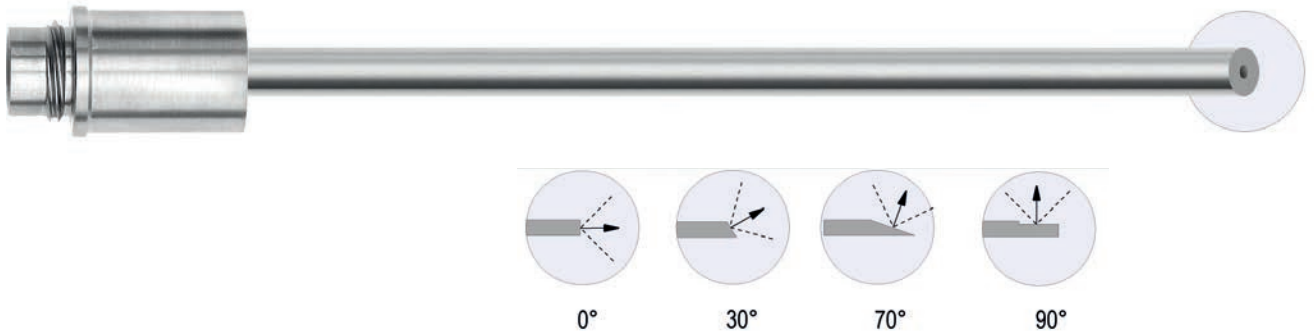


■ Cable Diameter: 3,5 mm to 4,8 mm, adhered

Item	Ø [mm]	Length [mm]	Item-No.
Standard - Optical fiber	3,5	1100	14-0020-00
Standard - Optical fiber	3,5	1800	13-1025-00
Standard - Optical fiber	3,5	2300	13-1026-00
Standard - Optical fiber	3,5	3000	13-1027-00
Standard - Optical fiber	3,5	3500	14-0024-00
Standard - Optical fiber	3,5	4000	14-0025-00
Standard - Optical fiber	3,5	5000	14-0026-00
Standard - Optical fiber	4,8	1300	14-0027-00
Standard - Optical fiber	4,8	1800	13-1028-00
Standard - Optical fiber	4,8	2300	13-1029-00
Standard - Optical fiber	4,8	2500	14-0030-00
Standard - Optical fiber	4,8	2600	14-0031-00
Standard - Optical fiber	4,8	3000	13-1030-00
Standard - Optical fiber	4,8	3500	14-0033-00
Standard - Optical fiber	4,8	3600	14-0034-00
Standard - Optical fiber	4,8	4000	14-0035-00
Standard - Optical fiber	4,8	5000	14-0036-00

# HIPP Passive Light Sticks

>> *additional lighting.*



## Product Profile



Passive light stick with Storz adapter for connection to an external light source.

## Technical Specifications

Diameter:	• 0,5 mm - 10 mm
Length:	• 50 mm - 1 m
Beam angle:	• 0°, 30°, 70°, 90°
Material:	• Glass fiber gripped in stainless steel tube

## Note

Lengths and diameters of the light sticks on request.

# HIPP Passive Light Sticks

>> *your notes.*

Your Notes

---



# HIPP Endoskop Service GmbH

>> *your requirements are our aims.*



## HIPP Accessories

Cold Light Sources & Optical Fibers



HIPP Endoskop Service GmbH  
Glottertalstrasse 10  
79108 Freiburg / Germany  
Telephone: +49 (0) 761 / 52800  
Telefax: +49 (0) 761 / 52855  
E-Mail: [info@hipp-es.com](mailto:info@hipp-es.com)  
Internet: [www.hipp-es.com](http://www.hipp-es.com)

